

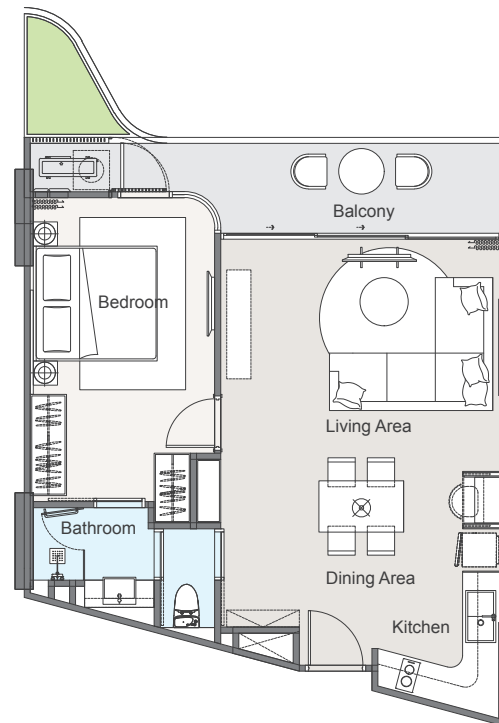


## 1A

Internal area : 56 m<sup>2</sup>  
External area : 11 m<sup>2</sup>  
Total area : 67 m<sup>2</sup>



 1-Bedroom  
 1-Bathroom

 Living & dining area

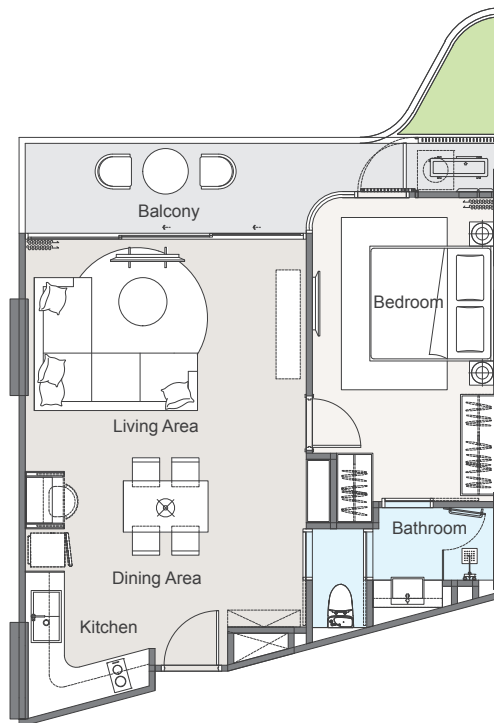


## 1A-M

Internal area : 56 m<sup>2</sup>  
External area : 11 m<sup>2</sup>  
Total area : 67 m<sup>2</sup>



 1-Bedroom  
 1-Bathroom


 Living & dining area

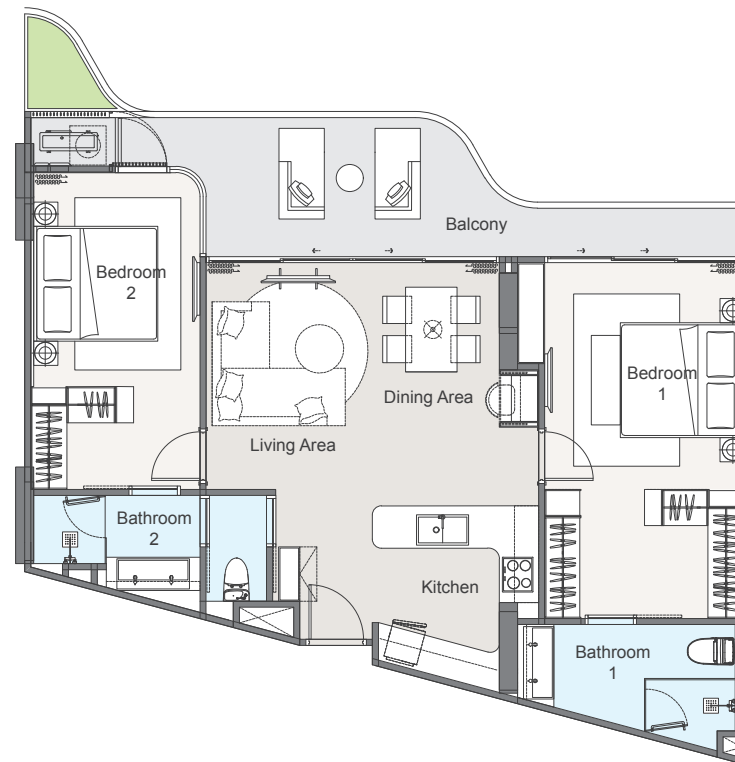


## 2A

Internal area : 82 m<sup>2</sup>  
External area : 17 m<sup>2</sup>  
Total area : 99 m<sup>2</sup>



 2-Bedrooms  
 2-Bathrooms

 Living & dining area

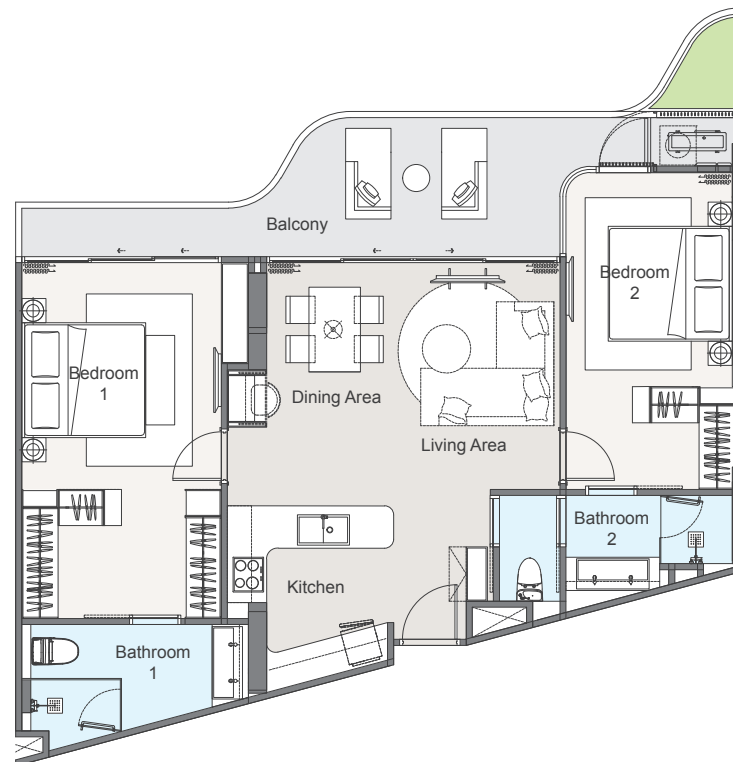


## 2A-M

Internal area : 82 m<sup>2</sup>  
External area : 17 m<sup>2</sup>  
Total area : 99 m<sup>2</sup>



 2-Bedrooms  
 2-Bathrooms

 Living & dining area

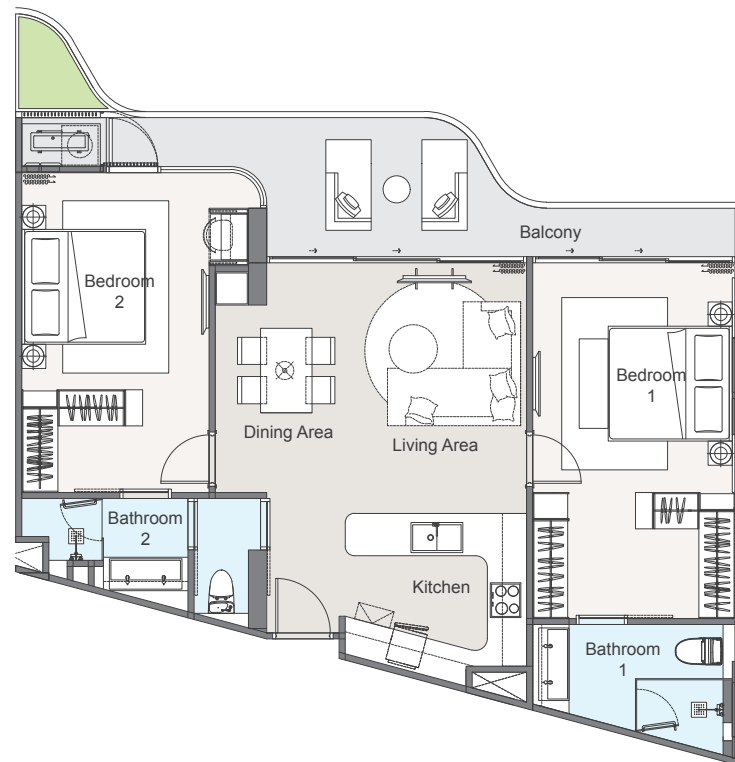


## 2B

Internal area : 84 m<sup>2</sup>  
External area : 16 m<sup>2</sup>  
Total area : 100 m<sup>2</sup>



 2-Bedrooms  
 2-Bathrooms

 Living & dining area

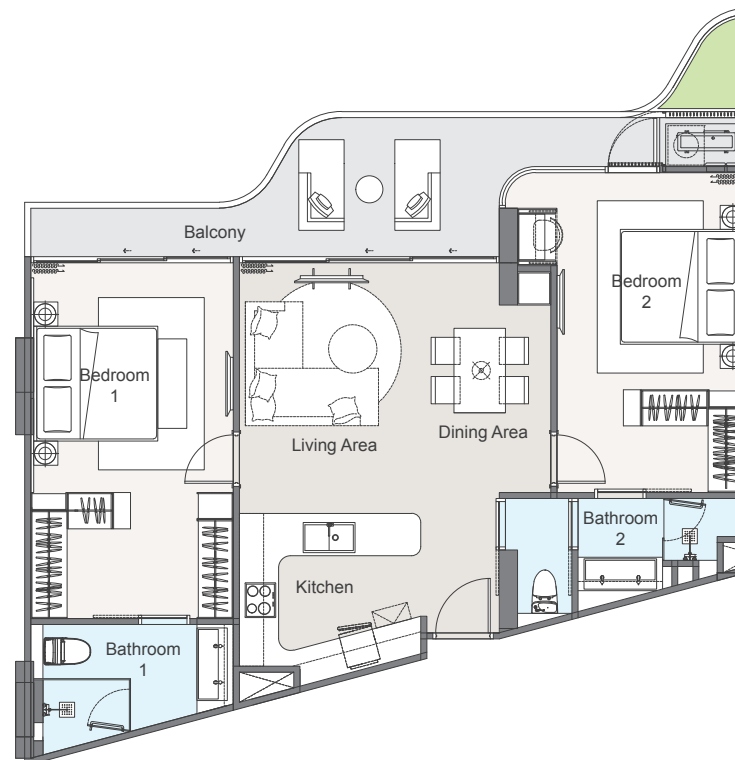


## 2B-M

Internal area : 84 m<sup>2</sup>  
External area : 16 m<sup>2</sup>  
Total area : 100 m<sup>2</sup>

 2-Bedrooms  
 2-Bathrooms


 Living & dining area




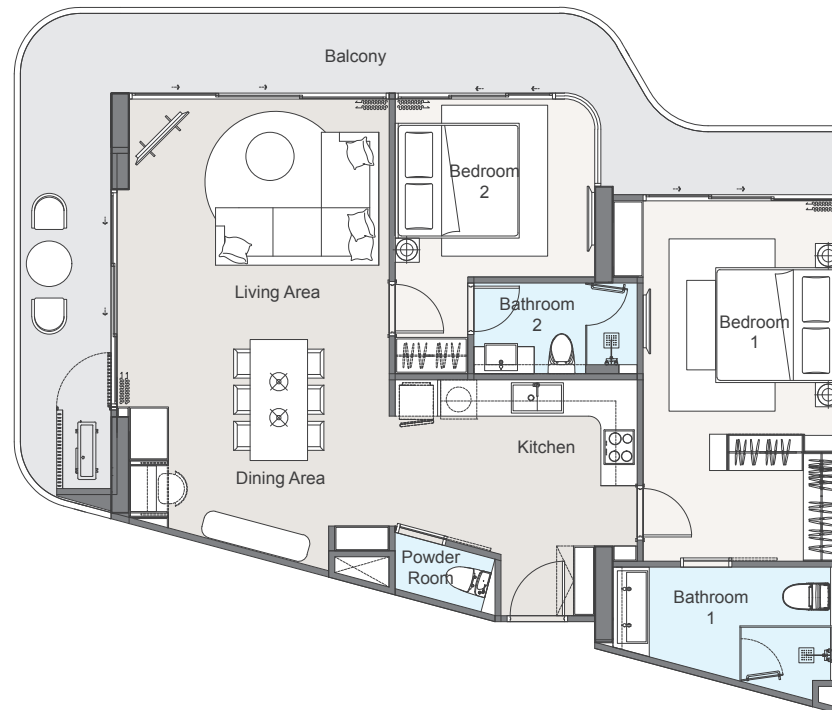
## 2C

Internal area : 93 m<sup>2</sup>  
External area : 27 m<sup>2</sup>  
Total area : 120 m<sup>2</sup>

 2-Bedrooms

 Living & dining area

 2.5-Bathrooms



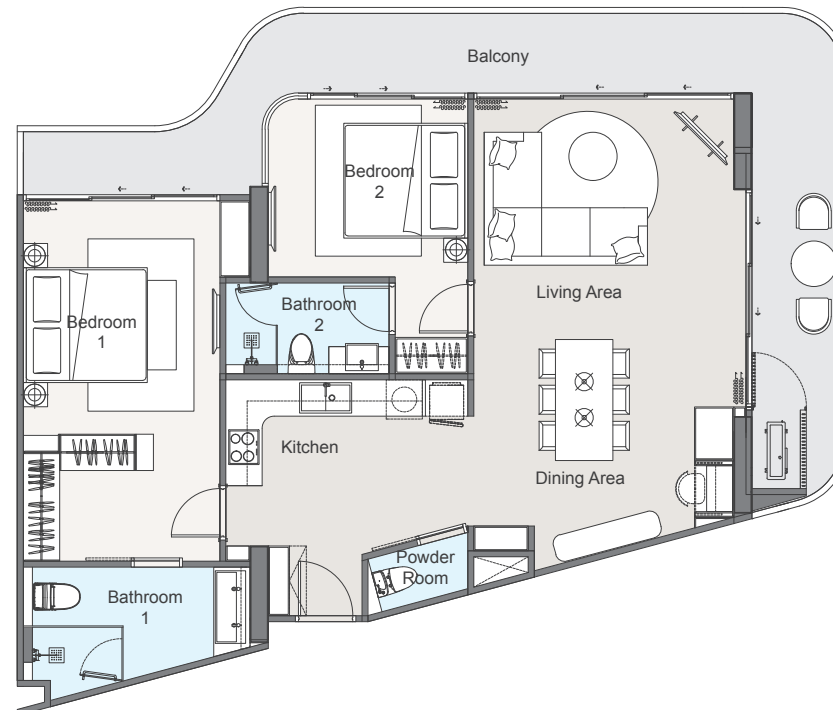
## 2C-M

Internal area : 93 m<sup>2</sup>  
External area : 27 m<sup>2</sup>  
Total area : 120 m<sup>2</sup>

 2-Bedrooms

 2.5-Bathrooms

 Living & dining area





## 2D-Penthouse




### Lower floor

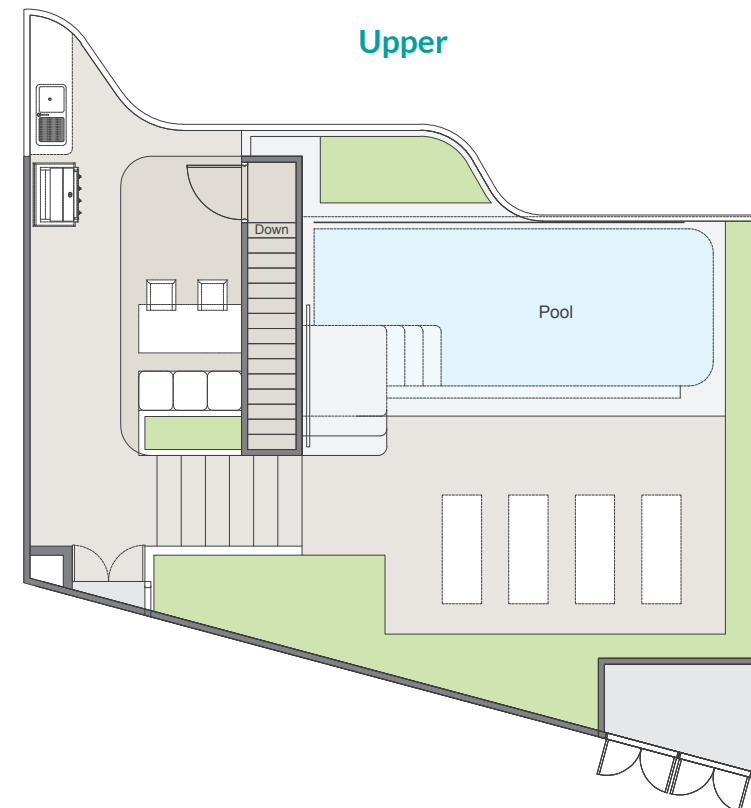
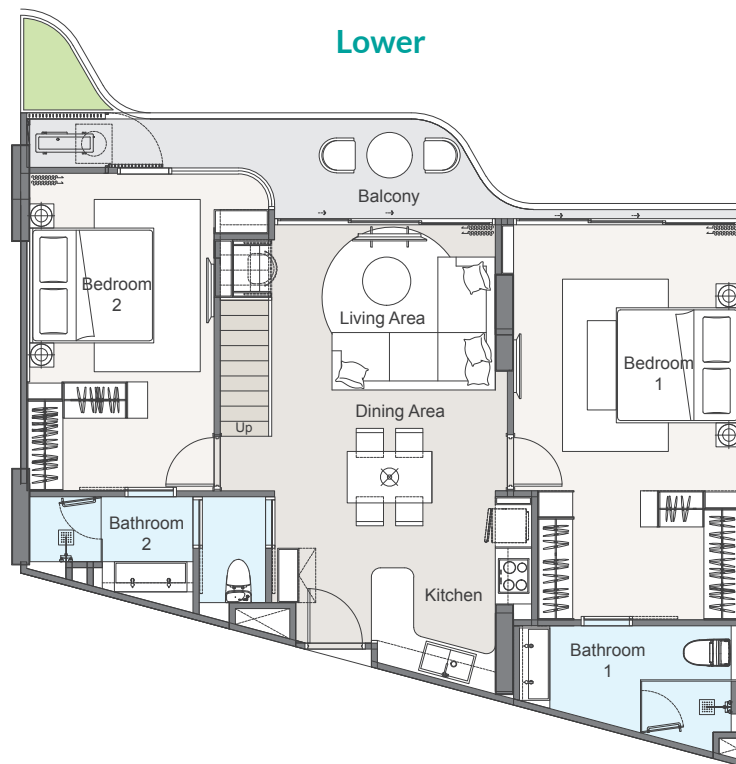
Internal area : 89 m<sup>2</sup>  
External area : 11 m<sup>2</sup>  
Total area : 100 m<sup>2</sup>

### Upper floor

Internal area : 5 m<sup>2</sup>  
External area : 72 m<sup>2</sup>  
Pool : 22 m<sup>2</sup>  
Total area : 99 m<sup>2</sup>

-  2-Bedrooms
-  2-Bathrooms

-  Living & dining area
-  Swimming pool
-  Rooftop deck





## 2D-Penthouse-M




### Lower floor

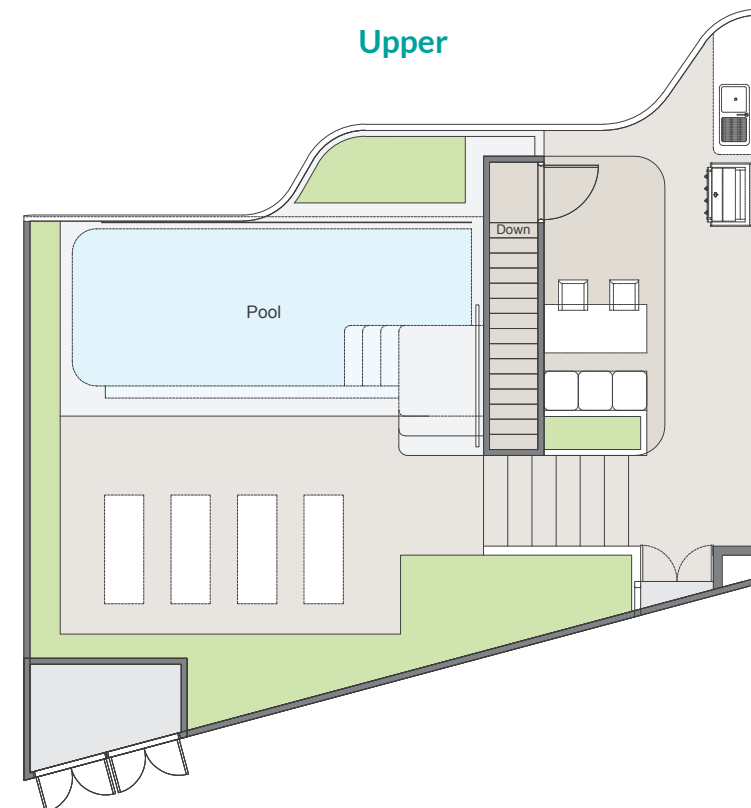
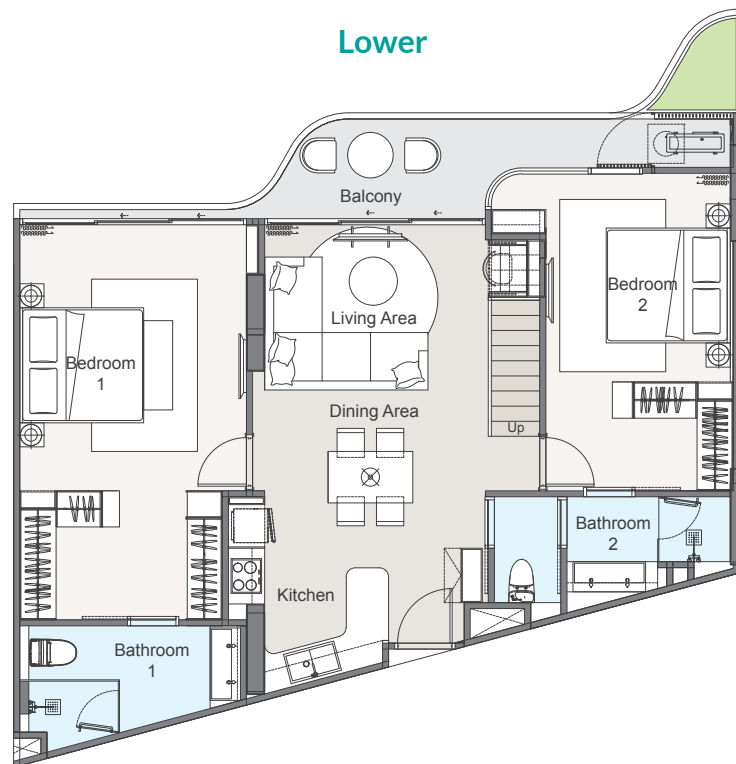
Internal area : 89 m<sup>2</sup>  
External area : 11 m<sup>2</sup>  
Total area : 100 m<sup>2</sup>

### Upper floor

Internal area : 5 m<sup>2</sup>  
External area : 72 m<sup>2</sup>  
Pool : 22 m<sup>2</sup>  
Total area : 99 m<sup>2</sup>

-  2-Bedrooms
-  2-Bathrooms

-  Living & dining area
-  Swimming pool
-  Rooftop deck





## 2E-Penthouse




### Lower floor

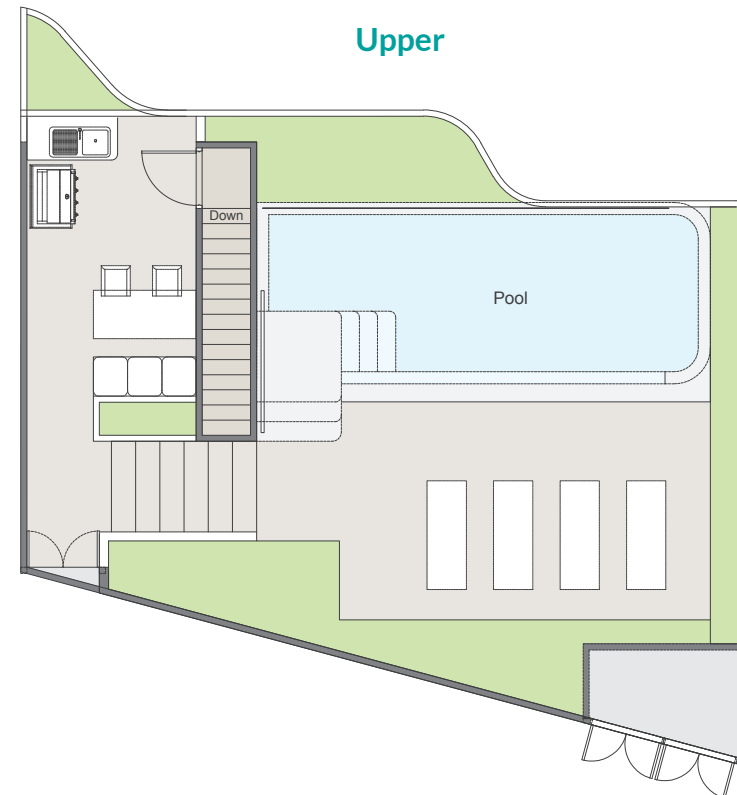
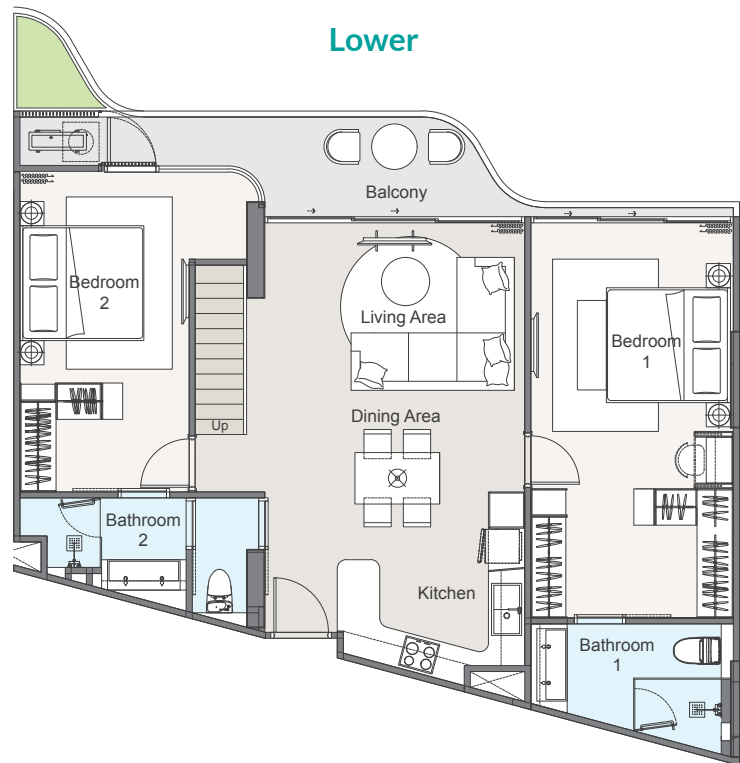
Internal area : 89 m<sup>2</sup>  
External area : 9 m<sup>2</sup>  
Total area : 98 m<sup>2</sup>

### Upper floor

Internal area : 5 m<sup>2</sup>  
External area : 70 m<sup>2</sup>  
Pool : 22 m<sup>2</sup>  
Total area : 97 m<sup>2</sup>

-  2-Bedrooms
-  2-Bathrooms

-  Living & dining area
-  Swimming pool
-  Rooftop deck





## 2E-Penthouse-M




### Lower floor

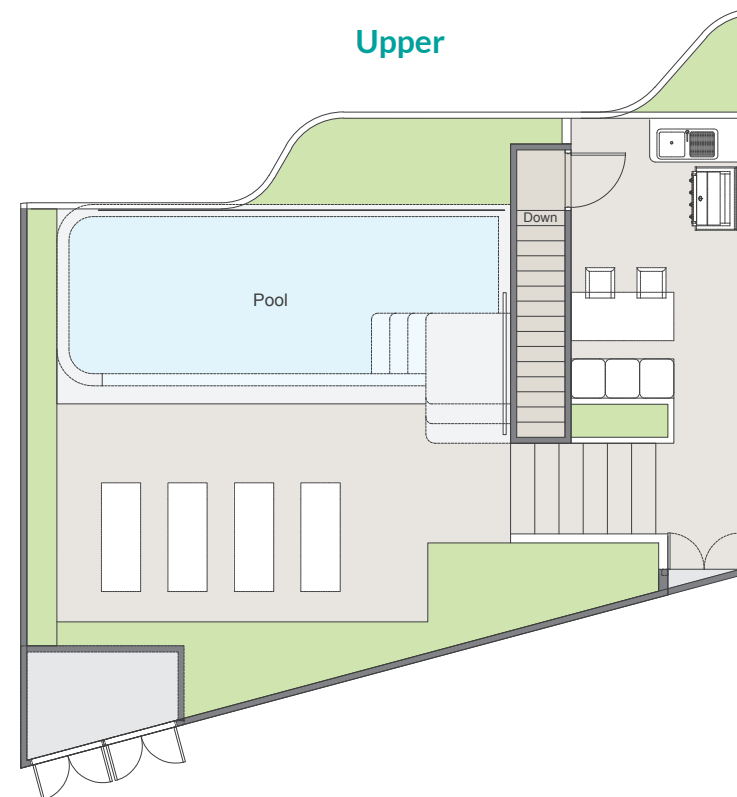
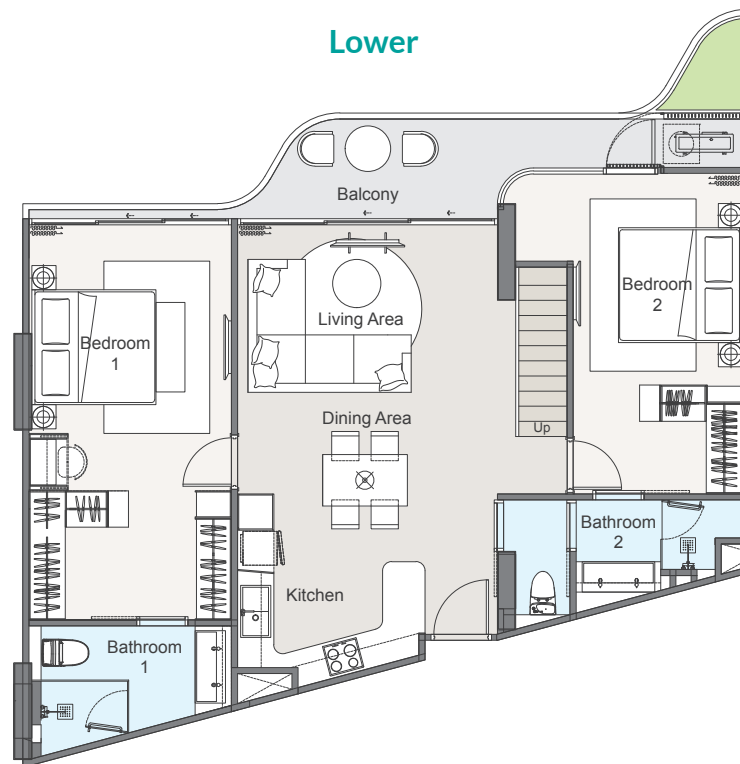
Internal area : 89 m<sup>2</sup>  
External area : 9 m<sup>2</sup>  
Total area : 98 m<sup>2</sup>

### Upper floor

Internal area : 5 m<sup>2</sup>  
External area : 70 m<sup>2</sup>  
Pool : 22 m<sup>2</sup>  
Total area : 97 m<sup>2</sup>



 2-Bedrooms  
 2-Bathrooms



 Living & dining area  
 Swimming pool  
 Rooftop deck

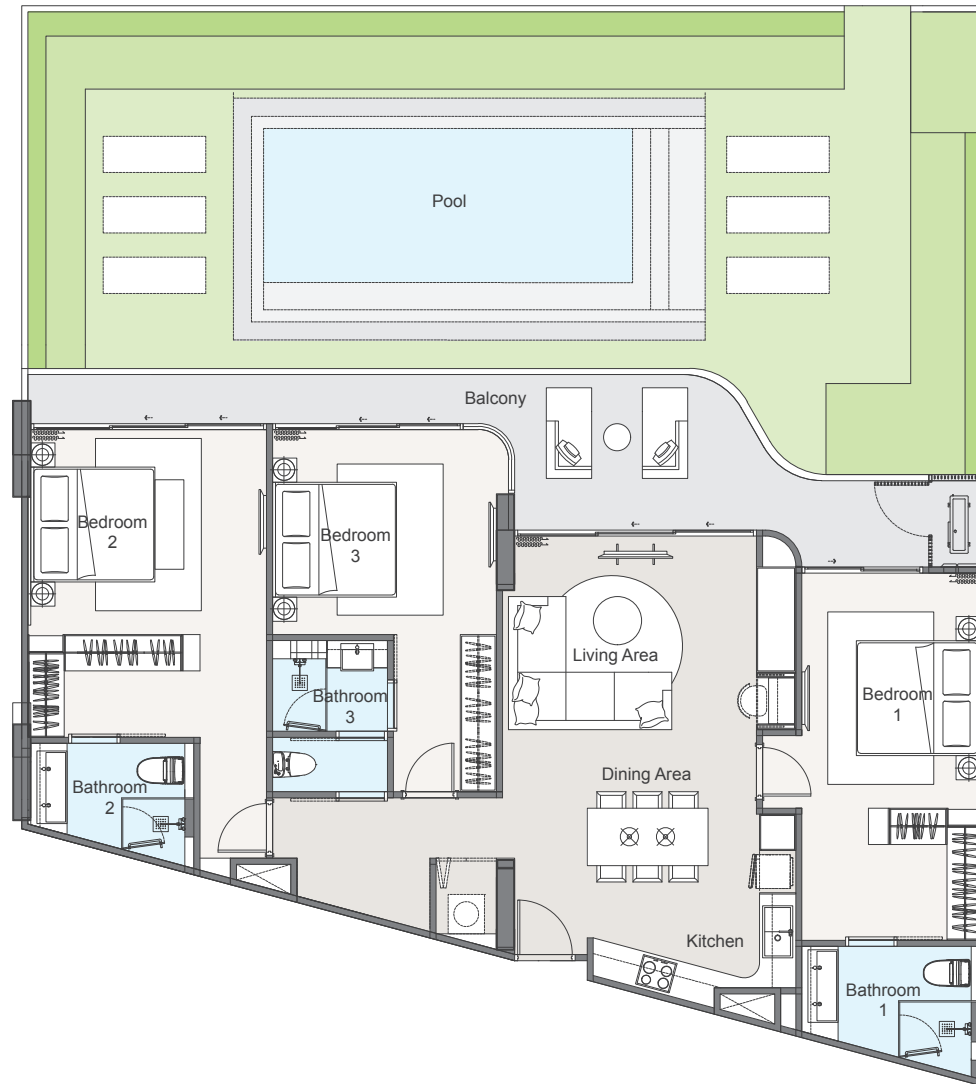


## 3A-Garden

Internal area : 120 m<sup>2</sup>  
 External area : 89 m<sup>2</sup>  
 Pool area : 32 m<sup>2</sup>  
 Total area : 241 m<sup>2</sup>



 3-Bedrooms  
 3-Bathrooms



 Living & dining area  
 Garden & Swimming pool

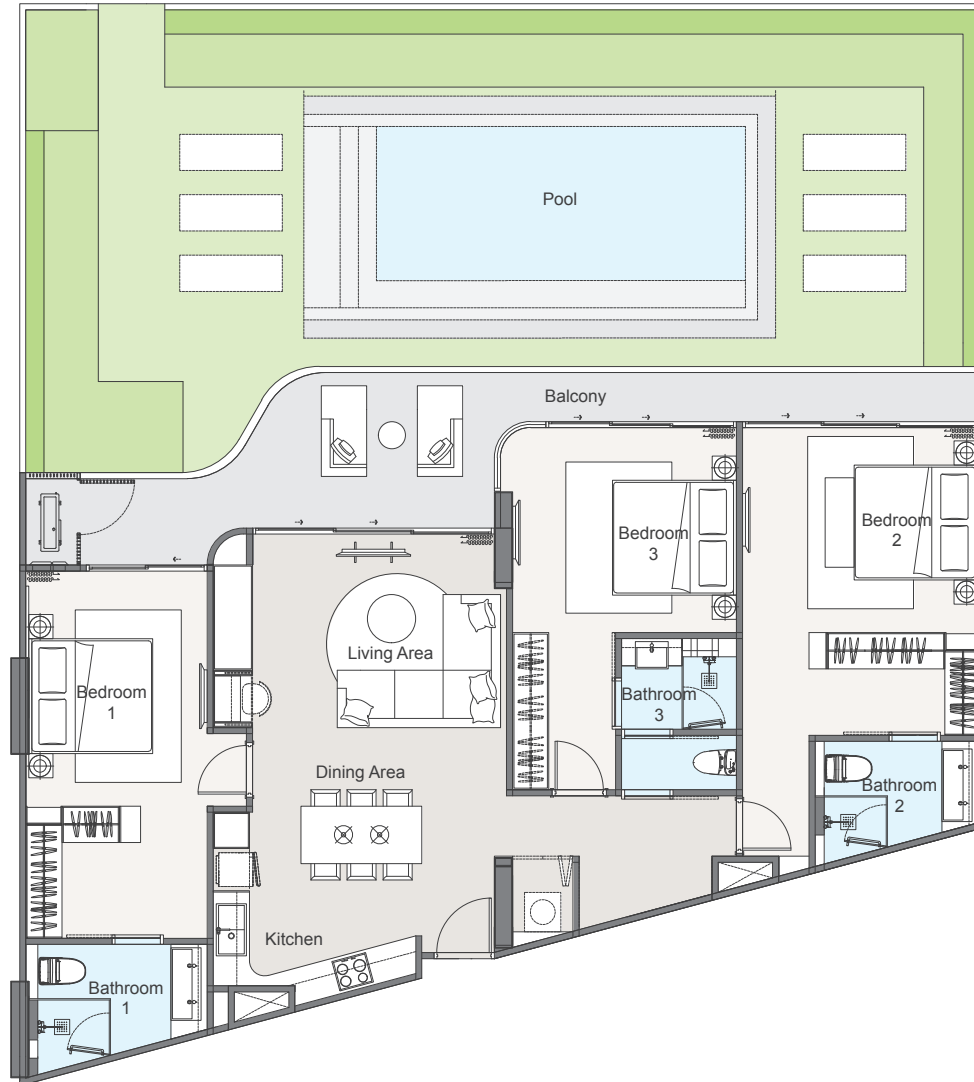


## 3A-Garden-M

Internal area : 120 m<sup>2</sup>  
 External area : 89 m<sup>2</sup>  
 Pool area : 32 m<sup>2</sup>  
 Total area : 241 m<sup>2</sup>

 3-Bedrooms  
 3-Bathrooms

 Living & dining area  
 Garden & Swimming pool



## 3C

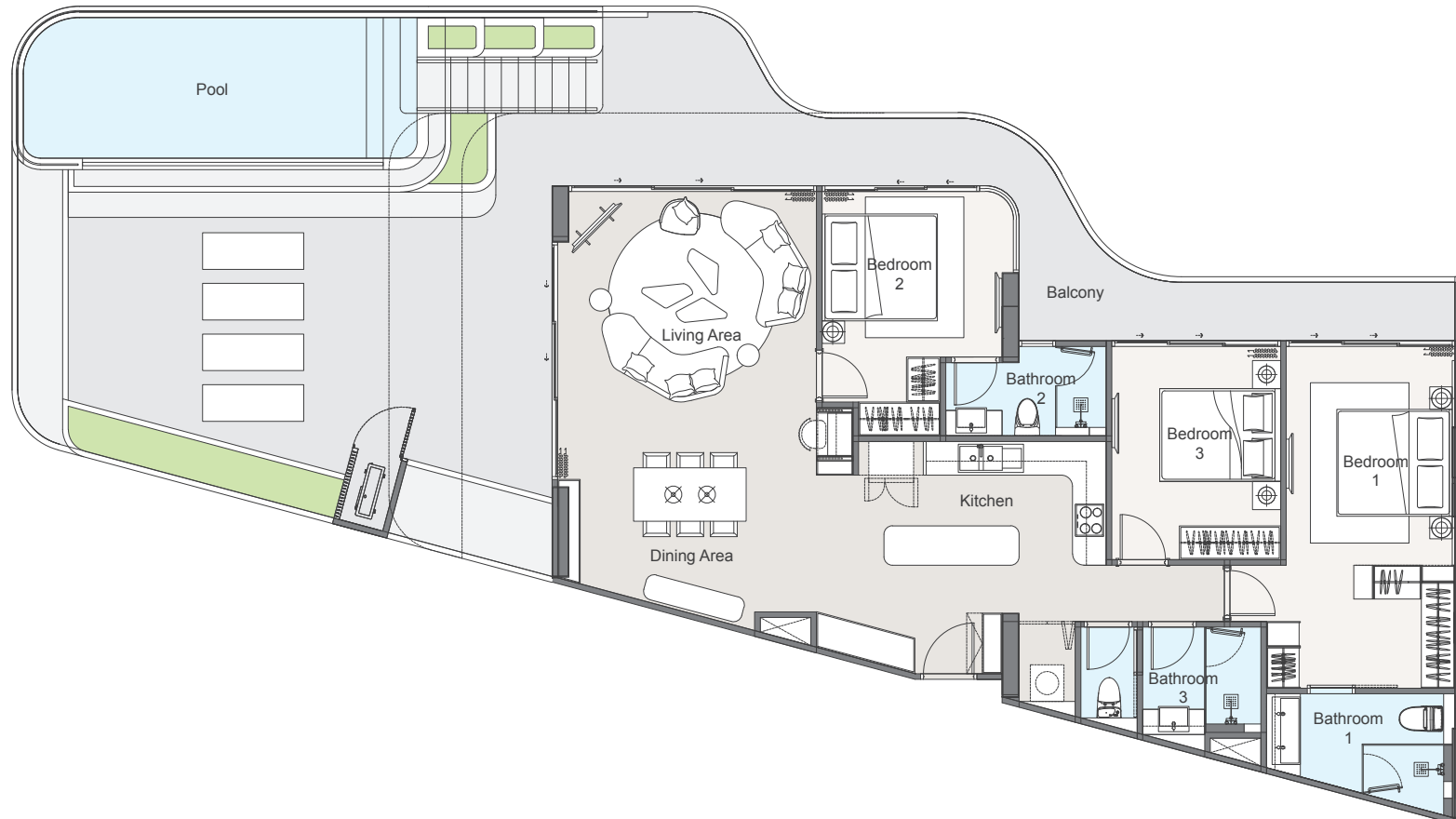
Internal area : 121 m<sup>2</sup>  
 External area : 82 m<sup>2</sup>  
 Pool area : 18 m<sup>2</sup>  
 Total area : 221 m<sup>2</sup>

 3-Bedrooms

 3-Bathrooms



 Living & dining area



 Swimming pool

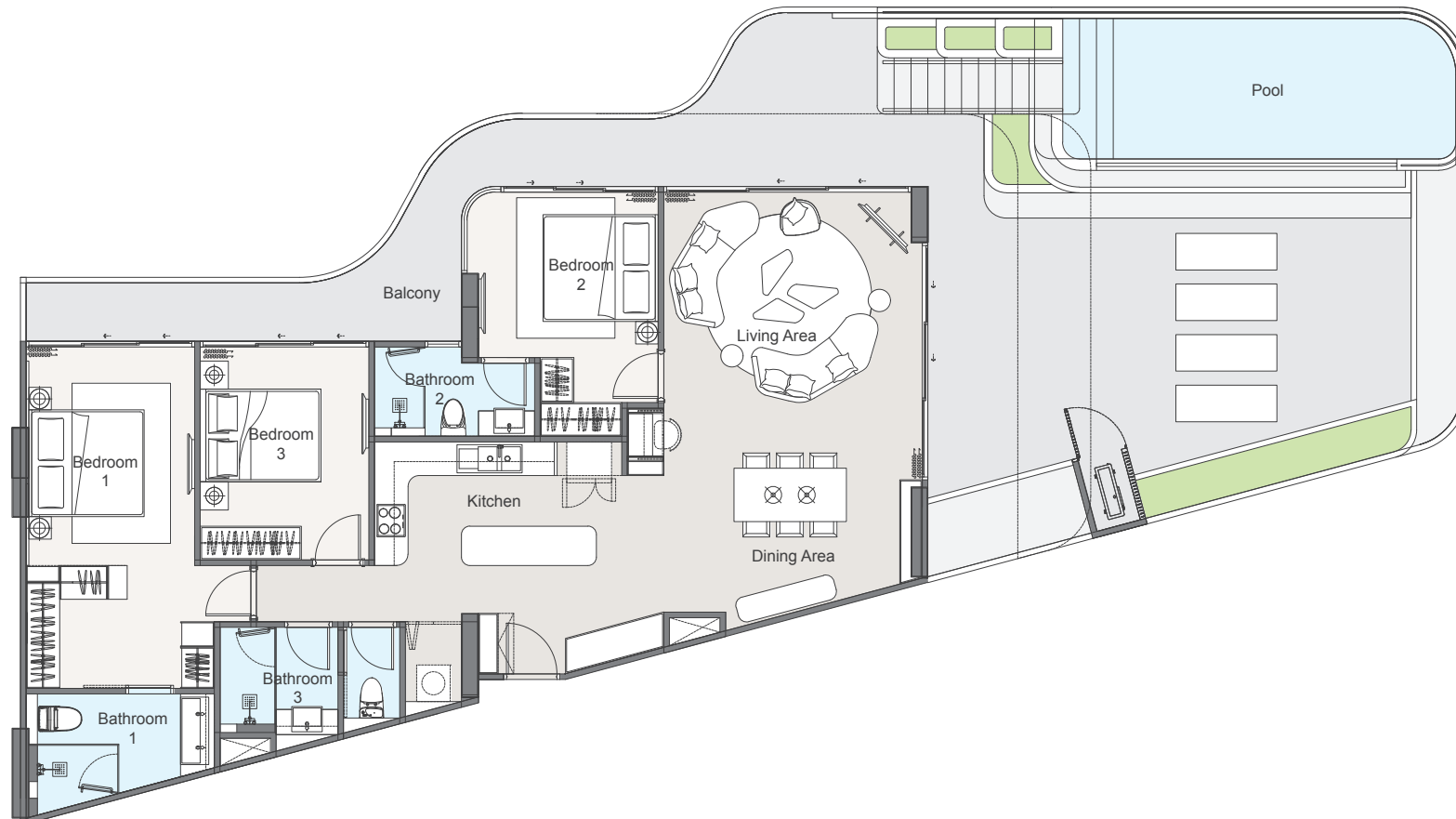


## 3C-M

Internal area : 121 m<sup>2</sup>  
 External area : 82 m<sup>2</sup>  
 Pool area : 18 m<sup>2</sup>  
 Total area : 221 m<sup>2</sup>

 3-Bedrooms  
 3-Bathrooms

 Living & dining area  
 Swimming pool





## 3E-Penthouse




### Lower floor

Internal area : 120 m<sup>2</sup>  
External area : 29 m<sup>2</sup>  
Total area : 149 m<sup>2</sup>

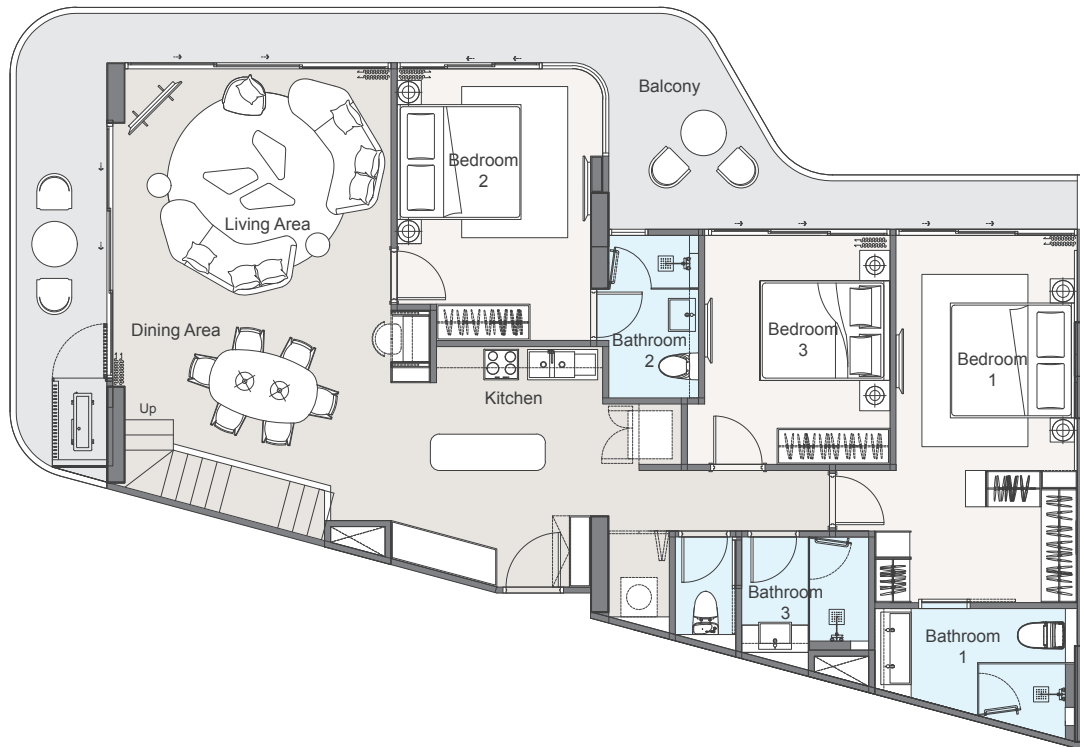
### Upper floor

Internal area : 9 m<sup>2</sup>  
External area : 109 m<sup>2</sup>  
Pool : 33 m<sup>2</sup>  
Total area : 151 m<sup>2</sup>

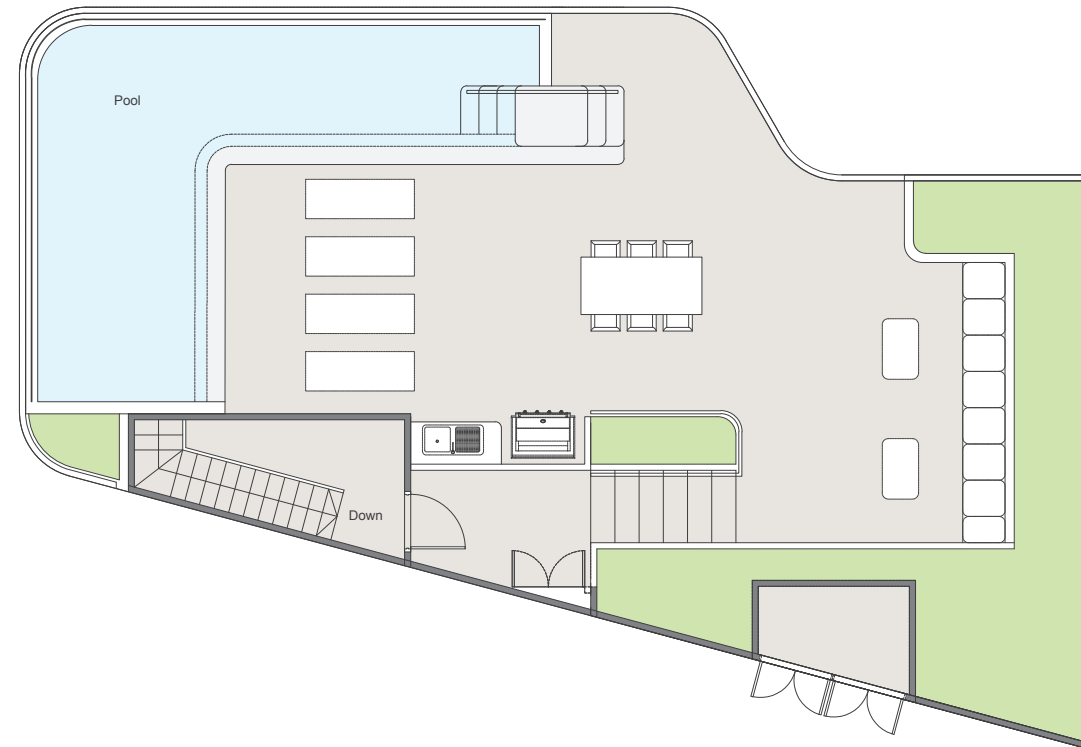
-  3-Bedrooms
-  3-Bathrooms

-  Living & dining area
-  Swimming pool
-  Rooftop deck

Lower



Upper





## 3E-Penthouse-M




### Lower floor

Internal area : 120 m<sup>2</sup>  
External area : 29 m<sup>2</sup>  
Total area : 149 m<sup>2</sup>

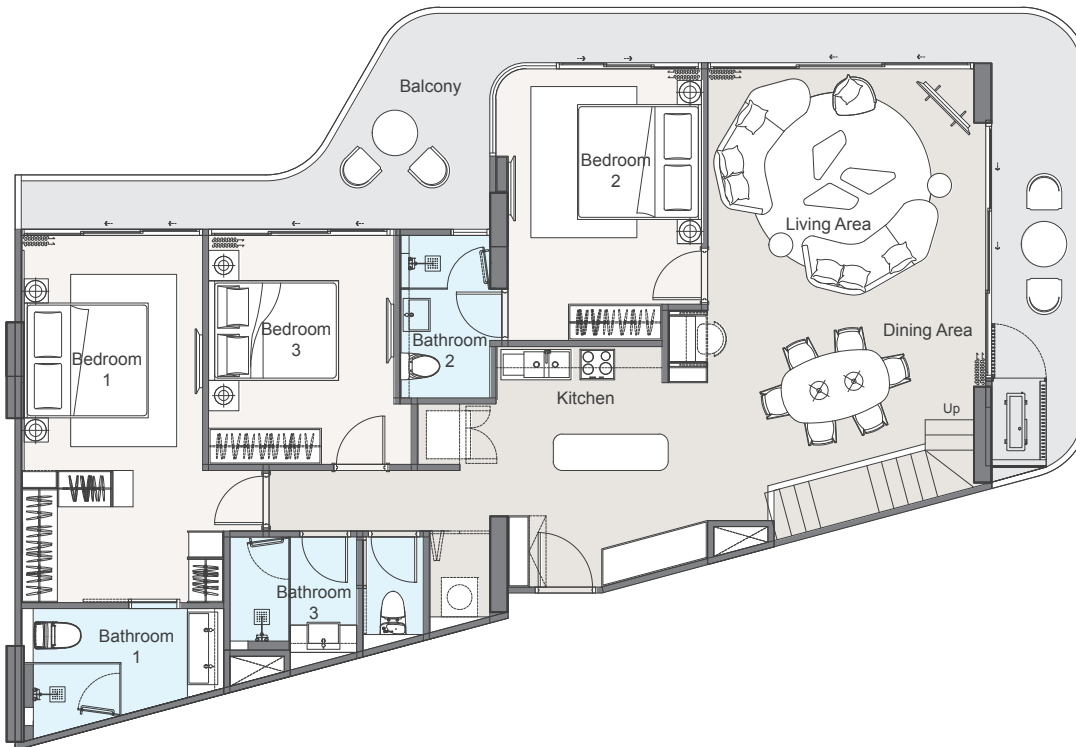
### Upper floor

Internal area : 9 m<sup>2</sup>  
External area : 109 m<sup>2</sup>  
Pool : 33 m<sup>2</sup>  
Total area : 151 m<sup>2</sup>

-  3-Bedrooms
-  3-Bathrooms

-  Living & dining area
-  Swimming pool
-  Rooftop deck

Lower



Upper

